

Office Furniture and Fixtures

LOT	OBJECT	QTY.	UNIT COST	AMOUNT	SPECIFICATIONS
1	Office Partitions with Built-in Table and Mobile Pedestal	15	22,500	337,500	<p>a) Panel                      *at least 3.2cm thickness                      *aluminum powder coated material                      *panel-base system                      *flash silver/anodized frame color                      *glass top tiles                      *light gray middle fabric tiles                      *sky blue bottom fabric tiles</p> <p>b) Work Surface/Table                      *at least 120 cm length                      *at least 60 cm width</p> <p>c) Cubicle partition (1st piece)                      *at least 120 cm length                      *at least 120 cm width                      *at least 3.2 cm thickness</p> <p>d) Cubicle partition (2nd piece)                      *at least 120 cm length                      *at least 60 cm width                      *at least 3.2 cm thickness</p> <p>e) Pedestal Cabinet:                      *at least 51.5 cm length                      *at least 41.5 cm width                      *at least 63.5 cm height                      *with caster</p>
	Heavy Duty fullback Chair	24	9,000	216,000	*with polyurethane leather seat rest and back rest material *with aluminum or steel base *with thick padded arm rest *with aluminum or steel frame arm rest *black color or other dark colors *at least 60 cm width *at least 45 cm seat height *at least 1-year warranty on parts and services
	Conference Table	1	15,000	15,000	*at least 8-Seater *at least 180.0 cm length *at least 120.0 cm width *at least 75.0 cm height

					*melamine-faced chipboard or better wood material
	Heavy Duty High Back Chair with Head Rest	1	23,500	23,500	*high back type *leather seat rest and back rest material *with padded metal armrest *with gas lift mechanism chrome star base *with caster
	Executive Table	1	28,900	28,900	*L-shape table *melamine laminated on particle board material *approximately Main table - L120 x W70 x H75 cm *approximately Connection top L70 x W70 cm *with Mobile pedestal - L40.5 x W47.5 x H65 cm *with Fixed pedestal - L39.5 x W41.5 x H45 cm
			<b>Subtotal</b>	<b>620,900</b>	
<b>2</b>	4 Drawer Lateral Cabinet	2	19,600	39,200	*all metal construction material *steel ball bearing *at least 0.9 mm or gauge 20 metal thickness *with central locking system *silver or other available monochrome color *at most 92.5 cm length *at most 50 cm width *at most 140 cm height
	Basic Cabinet (Steel With Vault)	1	12,320	12,320	*gray or white color *cold rolled steel material *at least 3-cabinets *with plastic divider *with central lock full extension drawers *at least 52" height *at least 18" length *at least 23" depth
			<b>Subtotal</b>	<b>51,520</b>	
<b>3</b>	Window Blinds	650	400	260,000	*material: Polyester *combination-type blind *shall be duo shade *shall have two layers of translucent and opaque horizontal stripped color *can be rolled up manually *color: sky blue or dark blue

			<b>Subtotal</b>	<b>260,000</b>	
4	Kitchen Cabinet (Overhead)	3	8,960	26,880	*at least 113.5cm length *at least 33.0 cm width *at least 72.0 cm height *at least 2 doors *at least 3 level *wood finish *with door handle *melamine-faced chipboard or better wood material *wall-mounted using compatible L-type corner brace
			<b>Subtotal</b>	<b>26,880</b>	
5	Partition Panel	2	20,160	40,320	*aluminum powder coated material or better *panel-base system *flash silver/anodized frame color *glass top tiles *light gray middle fabric tiles *sky blue bottom fabric tiles *at least 180 cm height *at least 60 cm width *at least 3.0 cm thickness
	Partition Panel	4	20,160	80,640	*aluminum powder coated material or better *panel-base system *flash silver/anodized frame color *glass top tiles *light gray middle fabric tiles *sky blue bottom fabric tiles *at least 180 cm height *at least 76 cm width *at least 3.0 cm thickness
	Partition Panel	3	20,160	60,480	*aluminum powder coated material or better *panel-base system *flash silver/anodized frame color *glass top tiles *light gray middle fabric tiles *sky blue bottom fabric tiles *at least 180 cm height *at least 120 cm width *at least 3.0 cm thickness
	Partition Panel Door	1	20,160	20,160	*aluminum powder coated material or better *panel-base system

					<ul style="list-style-type: none"> <li>*flash silver/anodized frame color</li> <li>*glass top tiles</li> <li>*light gray middle fabric tiles</li> <li>*sky blue bottom fabric tiles</li> <li>*at least 180 cm height</li> <li>*at least 90 cm width</li> <li>*at least 2.0 cm thickness</li> </ul>
			<b>Subtotal</b>	<b>201,600</b>	
<b>6</b>	Podium	1	25,760	25,760	<ul style="list-style-type: none"> <li>*medium density fiberboard (MDF) material or better</li> <li>*at least 60 cm length</li> <li>*at least 60 cm width</li> <li>*at most 120 cm height</li> <li>*with mountable 12" BAFE and DA Logo engraved in wood</li> </ul>
			<b>Subtotal</b>	<b>25,760</b>	
<b>7</b>	Corner Table	1	5,600	5,600	<ul style="list-style-type: none"> <li>*medium-density fiberboard or better material</li> <li>*at least 20 cm length</li> <li>*at least 20 cm width</li> <li>*at least 20 cm height</li> <li>*semi-gloss wood or better finish</li> <li>*at least one (1) drawer</li> </ul>
	Semi-Executive Table	2	8,960	17,920	<ul style="list-style-type: none"> <li>*L-shape table</li> <li>*at least 120 cm RW</li> <li>*at least 120 cm LW</li> <li>*at least 60 cm table width</li> <li>*at least 75 cm table height</li> <li>*melamine laminated on particle board material</li> <li>*at least 25 mm thick top panel</li> <li>*at least 18 mm thick side panel and front panel</li> <li>*at least 0.8 mm thick PVC edging</li> <li>*with 75 mm diameter plastic wirehole cap</li> <li>*with 15 mm diameter plastic glider</li> <li>*wood finish</li> <li>*with mobile pedestal</li> </ul>
	Table	1	4,480	4,480	<ul style="list-style-type: none"> <li>*pantry table</li> <li>*at least 1.50 m or 59" length</li> <li>*at least 0.60 m or 23" width</li> <li>*at least 0.75 m table height</li> </ul>
	Small Table	1	3,920	3,920	<ul style="list-style-type: none"> <li>*at least 0.65 m length</li> <li>*at least 0.65 m width</li> </ul>

					*at least 0.75 m table height
	Small Table	2	3,360	6,720	*at least 0.60 m length *at least 0.40 m width *at least 0.75 m table height
	TV Table	1	2,240	2,240	*TV table or rack *at most 40" length *at least 15" width *at least 15" height
			<b>Subtotal</b>	<b>40,880</b>	
<b>8</b>	Dining Chair	7	1,500	10,500	*polypropylene plastic or better seat and back rest material *steel or polypropylene plastic or better frame material *at least 40 cm width *at least 39 cm back rest height *at least 80 cm overall height *at least 40 cm seat height
	Executive Chair	4	13,440	53,760	*with lumbar support *high-quality mesh back rest material *with adjustable head rest angle *with adjustable arm rest height *with adjustable seat height, back rest angle *with lockable tilting function *with aluminum or steel base *with casters *black color or other dark colors *at least 110 cm length *at least 60 cm width *at least 45 cm depth *at least 45 cm seat height *at least 1-year warranty on parts and services
	Ottoman Chair	1	13,440	13,440	*at least 100 cm length *at least 40 cm width *at least 45 cm height *fabric or leatherette upholstery *wooden or better footing material
	Visitor Chair	4	3,360	13,440	*with arm and seat rest *at least 90 cm height *at least 49 cm width *at least 50 cm depth
	Sofa (2-seater)	1	13,440	13,440	*2-seater capacity *at least 125 cm length *at least 75 cm width *at least 70 cm height *fabric or leatherette upholstery

					*wooden or better footing material
	Stool	2	1,680	3,360	*fabric material or better seat material *at least 14" length *at least 14" width *at least 16" seat height
			<b>Subtotal</b>	<b>107,940</b>	
			<b>Grand Total</b>	<b>1,335,480.00</b>	

Prepared by:

Approved by:

*defulgar*  
**ENGR. DEXTER E. FULGAR**  
 Procurement Coordinator, PPMD

*ccpolido*  
**ENGR. CRISTY CECILIA P. POLIDO**  
 Chief, PPMD

## TERMS OF REFERENCE

### TITLE:

SUPPLY, DELIVERY, AND INSTALLATION OF PARTITION PANELS AND PARTITION PANEL DOOR TO BE INSTALLED IN BAFE PPMD OFFICE IN SRA, QUEZON CITY

### OBJECTIVE:

For this terms of reference, this aims to supply, deliver, and install partition panels and partition panel door in the BAFE PPMD office. Specifically, this intends to:

1. Minimize distracting sound and provide a sense of extra privacy around the PPMD conference room, as stated in the drafted layout.

### APPROVED BUDGET FOR THE CONTRACT (ABC):

The Approved Budget for the Contract is Two Hundred One Thousand Six Hundred Pesos (Php 201,600.00) inclusive of all taxes.

### TECHNICAL SPECIFICATIONS (for reference, see Annex A: PPMD floor plan)

ITEM/PARTICULARS	SPECIFICATIONS
Partition Panel	*aluminum powder coated material or better *panel-base system *flash silver/anodized frame color *glass top tiles *light gray middle fabric tiles *sky blue bottom fabric tiles *at least 180 cm height *at least 60 cm width *at least 3.0 cm thickness
Partition Panel	*aluminum powder coated material *panel-base system *flash silver/anodized frame color *glass top tiles *light gray middle fabric tiles *sky blue bottom fabric tiles *at least 180 cm height *at least 76 cm width *at least 3.0 cm thickness
Partition Panel	*aluminum powder coated material *panel-base system *flash silver/anodized frame color *glass top tiles *light gray middle fabric tiles *sky blue bottom fabric tiles *at least 180 cm height *at least 120 cm width *at least 3.0 cm thickness

ITEM/PARTICULARS	SPECIFICATIONS
Partition Panel Door	*aluminum powder coated material *panel-base system *flash silver/anodized frame color *glass top tiles *light gray middle fabric tiles *sky blue bottom fabric tiles *with doorknob *at least 180 cm height *at least 90 cm width *at least 2.0 cm thickness

**SCHEDULE OF DELIVERY:**

The schedule of delivery should be Thirty (30) days upon receipt of Notice of Proceed.

**PAYMENT**

Payment shall be done within thirty (30) calendar days upon receipt, inspection, and acceptance of the partition panels and partition panel door including the submission of the Official Receipt and other necessary documents.

**OTHER REQUIREMENTS:**

For the purpose, the following are additional requirements for the partition panels and partition panel door listed above:

- Mounting and Installation costs are included in the ABC; and
- At least 1-Year Manufacturer Warranty

Prepared by:

*defulgar*  
**ENGR. DEKTER E. FULGAR**  
 Procurement Coordinator, PPMD

Approved by:

*ccristy*  
**ENGR. CRISTY CECILIA P. POLIDO**  
 Chief, PPMD



## TERMS OF REFERENCE

### TITLE:

SUPPLY, DELIVERY, AND INSTALLATION OF VARIOUS FURNITURE AND FIXTURE TO BE INSTALLED IN THE BAFE PPMD OFFICE IN SRA, QUEZON CITY

### OBJECTIVE:

For this terms of reference, this aims to supply, deliver, and install various office furniture and fixture in the BAFE PPMD office. Specifically, this intends to:

1. Provide office furniture and fixtures for PPMD employees; and
2. Provide storage area for the documents and effects of the staff as stated in the drafted layout.

### APPROVED BUDGET FOR THE CONTRACT (ABC):

The Approved Budget for the Contract is Fifty-One Thousand Five Hundred Twenty Pesos (Php 51,520.00) inclusive of all taxes.

### TECHNICAL SPECIFICATIONS (for reference, see Annex A: PPMD floor plan)

ITEM/PARTICULARS	SPECIFICATIONS
Basic Cabinet with Vault	*gray or white color *cold rolled steel material *at least 3-cabinets *with plastic divider *with central lock full extension drawers *at least 52" height *at least 18" length *at least 23" depth
4-Drawer Lateral Cabinet	*all metal construction material *steel ball bearing *at least 0.9 mm or gauge 20 metal thickness *with central locking system *silver or other available monochrome color *at most 92.5 cm length *at most 50 cm width *at most 140 cm height

### SCHEDULE OF DELIVERY:

The schedule of delivery should be Thirty (30) days upon receipt of Notice of Proceed.

### PAYMENT

Payment shall be done within thirty (30) calendar days upon receipt, inspection, and acceptance of the various furniture and fixtures including the submission of the Official Receipt and other necessary documents.

**OTHER REQUIREMENTS:**

For the purpose, the following are additional requirements for the various furniture and fixtures listed above:

- Mounting and Installation costs are included in the ABC; and
- At least 1-Year Manufacturer Warranty

Prepared by:

*defulgar*  
**ENGR. DEXTER E. FULGAR**  
Procurement Coordinator, PPMD

Approved by:

*c.p. polido*  
**ENGR. CRISTY CECILIA P. POLIDO**  
Chief, PPMD

## TERMS OF REFERENCE

### TITLE:

SUPPLY, DELIVERY, AND INSTALLATION OF VARIOUS FURNITURE AND FIXTURES TO BE INSTALLED IN BAFE PPMD OFFICE IN SRA, QUEZON CITY

### OBJECTIVE:

This Terms of Reference aims to facilitate the supply, delivery, and installation of various furniture and fixtures in the BAFE PPMD office. Specifically, this intends to:

1. Provide office furniture and fixture for PPMD employees as stated in the drafted layout.

### APPROVED BUDGET FOR THE CONTRACT (ABC):

The Approved Budget for the Contract is One Hundred Seven Thousand Nine Hundred Forty Pesos (Php 107,940.00) inclusive of all taxes.

### TECHNICAL SPECIFICATIONS (for reference, see Annex A: PPMD floor plan)

ITEM/PARTICULARS	SPECIFICATIONS
Dining Chair	*polypropylene plastic or better seat and back rest material *steel or polypropylene plastic or better frame material *at least 40 cm width *at least 39 cm back rest height *at least 80 cm overall height *at least 40 cm seat height
Executive Chair	*with lumbar support *high-quality mesh back rest material *with adjustable head rest angle *with adjustable arm rest height *with adjustable seat height, back rest angle *with lockable tilting function *with aluminum or steel base *with casters *black color or other dark colors *at least 110 cm length *at least 60 cm width *at least 45 cm depth *at least 45 cm seat height *at least 1-year warranty on parts and services
Ottoman Chair	*at least 100 cm length *at least 40 cm width *at least 45 cm height *fabric or leatherette upholstery *wooden or better footing material
Sofa (2-seater)	*2-seater capacity *at least 125 cm length

ITEM/PARTICULARS	SPECIFICATIONS
	*at least 75 cm width *at least 70 cm height *fabric or leatherette upholstery *wooden or better footing material
Stool	*fabric material or better seat material *at least 14" length *at least 14" width *at least 16" seat height
Visitor Chair	*with arm and seat rest *at least 90 cm height *at least 49 cm width *at least 50 cm depth

**SCHEDULE OF DELIVERY:**

The schedule of delivery should be Thirty (30) days upon receipt of Notice of Proceed.

**PAYMENT**

Payment shall be done within thirty (30) calendar days upon receipt, inspection, and acceptance of the various furniture and fixtures including the submission of the Official Receipt and other necessary documents.

**OTHER REQUIREMENTS:**

For the purpose, the following are additional requirements for the various furniture and fixtures listed above:

- Mounting and Installation costs are included in the ABC; and
- At least 1-Year Manufacturer Warranty

Prepared by:

*difulgar*  
**ENGR. DEXTER E. FULGAR**  
 Procurement Coordinator, PPMD

Approved by:

*egmish*  
**ENGR. CRISTY CECILIA P. POLIDO**  
 Chief, PPMD

## TERMS OF REFERENCE

### TITLE:

SUPPLY, DELIVERY, AND INSTALLATION OF VARIOUS FURNITURE AND FIXTURES TO BE INSTALLED IN BAFE PPMD OFFICE IN SRA, QUEZON CITY

### OBJECTIVE:

This Terms of Reference aims to facilitate the supply, delivery, and installation of various furniture and fixtures in the BAFE PPMD office. Specifically, this intends to:

1. Provide office furniture and fixtures for PPMD employees as stated in the drafted layout.

### APPROVED BUDGET FOR THE CONTRACT (ABC):

The Approved Budget for the Contract is Forty Thousand Eight Hundred Eighty Pesos (Php 40,880.00) inclusive of all taxes.

### TECHNICAL SPECIFICATIONS (for reference, see Annex A: PPMD floor plan)

ITEM/PARTICULARS	SPECIFICATIONS
Corner Table	*medium-density fiberboard or better material *at least 20 cm length *at least 20 cm width *at least 20 cm height *semi-gloss wood or better finish *at least one (1) drawer
Semi-Executive Table (L-shape table)	*L-shape table *at least 120 cm RW *at least 120 cm LW *at least 60 cm table width *at least 75 cm table height *melamine laminated on particle board material *at least 25 mm thick top panel *at least 18 mm thick side panel and front panel *at least 0.8 mm thick PVC edging. *with 75 mm diameter plastic wirehole cap *with 15 mm diameter plastic glider *wood finish *with mobile pedestal
Table	*pantry table *at least 1.50 m or 59" length *at least 0.60 m or 23" width *at least 0.75 m table height
Small Table	*at least 0.65 m length *at least 0.65 m width *at least 0.75 m table height
Small Table	*at least 0.60 m length

ITEM/PARTICULARS	SPECIFICATIONS
	*at least 0.40 m width *at least 0.75 m table height
TV Table	*TV table or rack *at most 40" length *at least 15" width *at least 15" height

**SCHEDULE OF DELIVERY:**

The schedule of delivery should be Thirty (30) days upon receipt of Notice of Proceed.

**PAYMENT**

Payment shall be done within thirty (30) calendar days upon receipt, inspection, and acceptance of the various furniture and fixtures including the submission of the Official Receipt and other necessary documents.

**OTHER REQUIREMENTS:**

For the purpose, the following are additional requirements for the various furniture and fixture listed above:

- Mounting and Installation costs are included in the ABC; and
- At least 1-Year Manufacturer Warranty

Prepared by:

*D. Fulgar*

**ENGR. DEXTER E. FULGAR**  
Procurement Coordinator, PPMD

Approved by:

*C. Polido*

**ENGR. CRISTY CECILIA P. POLIDO**  
Chief, PPMD

## TERMS OF REFERENCE

### TITLE:

SUPPLY, DELIVERY, AND INSTALLATION OF PODIUM TO BE INSTALLED IN BAFE PPMD OFFICE IN SRA, QUEZON CITY

### OBJECTIVE:

This Terms of Reference aims to facilitate the supply, delivery, and installation of podium in the BAFE PPMD office. Specifically, this intends to:

1. Provide office furniture and fixture in the PPMD conference room as stated in the drafted layout.

### APPROVED BUDGET FOR THE CONTRACT (ABC):

The Approved Budget for the Contract is Twenty-Five Thousand Seven Hundred Sixty Pesos (Php 25,760.00) inclusive of all taxes.

### TECHNICAL SPECIFICATIONS (for reference, see Annex A: PPMD floor plan)

ITEM/PARTICULARS	SPECIFICATIONS
Podium	*medium density fiberboard (MDF) material or better *at least 60 cm length *at least 60 cm width *at most 120 cm height *with mountable 12" BAFE and DA Logo engraved in wood

### SCHEDULE OF DELIVERY:

The schedule of delivery should be Thirty (30) days upon receipt of Notice of Proceed.

### PAYMENT

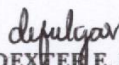
Payment shall be done within thirty (30) calendar days upon receipt, inspection, and acceptance of the podium including the submission of the Official Receipt and other necessary documents.

### OTHER REQUIREMENTS:

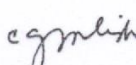
For the purpose, the following are additional requirements for the podium listed above:

- Mounting and Installation costs are included in the ABC; and
- At least 1-Year Manufacturer Warranty

Prepared by:

  
**ENGR. DEXTER E. FULGAR**  
Procurement Coordinator, PPMD

Approved by:

  
**ENGR. CRISTY CECILIA P. POLIDO**  
Chief, PPMD

## TERMS OF REFERENCE

### TITLE:

SUPPLY, DELIVERY, AND INSTALLATION OF KITCHEN CABINET TO BE INSTALLED IN THE BAFE PPMD OFFICE IN SRA, QUEZON CITY

### OBJECTIVE:

This Terms of Reference aims to facilitate the supply, delivery, and installation of kitchen cabinets in the BAFE PPMD office. Specifically, this intends to:

1. Provide office furniture and fixtures for PPMD employees; and
2. Provide storage for the staff as stated in the drafted layout.

### APPROVED BUDGET FOR THE CONTRACT (ABC):

The Approved Budget for the Contract is Twenty-Six Thousand Eight Hundred Eighty Pesos (Php 26,880.00) inclusive of all taxes.

### TECHNICAL SPECIFICATIONS (for reference, see Annex A: PPMD floor plan)

ITEM/PARTICULARS	SPECIFICATIONS
Kitchen Cabinet (Overhead)	*at least 113.5 cm length *at least 33.0 cm width *at least 72.0 cm height *at least 2 doors *at least 3 level *wood finish *with door handle *melamine-faced chipboard or better wood material *wall-mounted using compatible L-type corner brace

### SCHEDULE OF DELIVERY:

The schedule of delivery should be Thirty (30) days upon receipt of Notice of Proceed.

### PAYMENT

Payment shall be done within thirty (30) calendar days upon receipt, inspection, and acceptance of the kitchen cabinets including the submission of the Official Receipt and other necessary documents.



**OTHER REQUIREMENTS:**

For the purpose, the following are additional requirements for the kitchen cabinet listed above:

- Mounting and Installation costs are included in the ABC; and
- At least 1-Year Manufacturer Warranty

Prepared by:

*dfulgarr*

**ENGR. DEXTER E. FULGAR**

Procurement Coordinator, PPMD

Approved by:

*ccpolido*

**ENGR. CRISTY CECILIA P. POLIDO**

Chief, PPMD

## TERMS OF REFERENCE

### TITLE:

SUPPLY, DELIVERY, AND INSTALLATION OF WINDOW BLINDS TO BE INSTALLED IN THE BAFE PPMD OFFICE IN SRA, QUEZON CITY

### OBJECTIVE:

This Terms of Reference aims to facilitate the supply, delivery, and installation of window blinds in the BAFE PPMD office. Specifically, this intends to:

1. Provide comfortable working environment and sense of privacy for PPMD employees as stated in the drafted layout.

### APPROVED BUDGET FOR THE CONTRACT (ABC):

The Approved Budget for the Contract is Two Hundred Sixty Thousand Pesos (Php 260,000.00) inclusive of all taxes.

### TECHNICAL SPECIFICATIONS (for reference, see Annex A: PPMD floor plan)

ITEM/PARTICULARS	SPECIFICATIONS
Window Blinds	*material: Polyester *combination-type blind *shall be duo shade *shall have two layers of translucent and opaque horizontal stripped color *can be rolled up manually *color: sky blue or dark blue

### SCHEDULE OF DELIVERY:

The schedule of delivery should be Thirty (30) days upon receipt of Notice of Proceed.

### PAYMENT

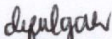
Payment shall be done within thirty (30) calendar days upon receipt, inspection, and acceptance of the window blinds including the submission of the Official Receipt and other necessary documents.

### OTHER REQUIREMENTS:

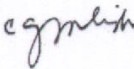
For the purpose, the following are additional requirements for the window blinds listed above:

- Mounting and Installation costs are included in the ABC;
- Shall include free labor and materials on installation; and
- At least 1-Year Manufacturer Warranty

Prepared by:

  
**ENGR. DEXTER E. FULGAR**  
Procurement Coordinator, PPMD

Approved by:

  
**ENGR. CRISTY CECILIA P. POLIDO**  
Chief, PPMD

## TERMS OF REFERENCE

### TITLE:

SUPPLY, DELIVERY, AND INSTALLATION OF VARIOUS FURNITURE AND FIXTURES TO BE INSTALLED IN THE BAFE PPMD OFFICE IN SRA, QUEZON CITY

### OBJECTIVE:

This Terms of Reference aims to facilitate the supply, delivery, and installation of various office furniture and fixtures in the BAFE PPMD office. Specifically, it intends to:

1. Provide office furniture and fixtures for PPMD employees; and
2. Provide storage for the staff as stated in the drafted layout.

### APPROVED BUDGET FOR THE CONTRACT (ABC):

The Approved Budget for the Contract is Six Hundred Twenty Thousand Nine Hundred Pesos (Php 620,900.00) inclusive of all taxes.

### TECHNICAL SPECIFICATIONS (for reference, see Annex A: PPMD floor plan)

ITEM/PARTICULARS	SPECIFICATIONS
Heavy Duty Fullback Chair	<ul style="list-style-type: none"><li>*with polyurethane leather seat rest and back rest material</li><li>*with aluminum or steel base</li><li>*with thick padded arm rest</li><li>*with aluminum or steel frame arm rest</li><li>*black color or other dark colors</li><li>*at least 60 cm width</li><li>*at least 45 cm seat height</li><li>*at least 1-year warranty on parts and services</li></ul>
Conference Table	<ul style="list-style-type: none"><li>*at least 8-Seater</li><li>*at least 180.0 cm length</li><li>*at least 120.0 cm width</li><li>*at least 75.0 cm height</li><li>*melamine-faced chipboard or better wood material</li></ul>
Executive Table	<ul style="list-style-type: none"><li>*L-shape table</li><li>*melamine laminated on particle board material</li><li>*approximately Main table - L120 x W70 x H75 cm</li><li>*approximately Connection top L70 x W70 cm</li><li>*with Mobile pedestal - L40.5 x W47.5 x H65 cm</li><li>*with Fixed pedestal - L39.5 x W41.5 x H45 cm</li></ul>
Heavy Duty High Back Chair with Head Rest	<ul style="list-style-type: none"><li>*high back type</li><li>*leather seat rest and back rest material</li><li>*with padded metal armrest</li><li>*with gas lift mechanism chrome star base</li><li>*with caster</li></ul>
Office Partitions with Built-in Table and Mobile Pedestal	<ul style="list-style-type: none"><li>a.) Panel<ul style="list-style-type: none"><li>*at least 3.2cm thickness</li><li>*aluminum powder coated material</li><li>*panel-base system</li></ul></li></ul>

ITEM/PARTICULARS	SPECIFICATIONS
	*flash silver/anodized frame color *glass top tiles *light gray middle fabric tiles *sky blue bottom fabric tiles b.) Work Surface/Table *at least 120 cm length *at least 60 cm width c.) Cubicle partition (1 <sup>st</sup> piece) *at least 120 cm length *at least 120 cm width *at least 3.2 cm thickness d.) Cubicle partition (2 <sup>nd</sup> piece) *at least 120 cm length *at least 60 cm width *at least 3.2 cm thickness e.) Pedestal Cabinet: *at least 51.5 cm length *at least 41.5 cm width *at least 63.5 cm height *with caster

**SCHEDULE OF DELIVERY:**

The schedule of delivery should be Thirty (30) days upon receipt of Notice of Proceed.

**PAYMENT**

Payment shall be done within thirty (30) calendar days upon receipt, inspection, and acceptance of the various furniture and fixtures including the submission of the Official Receipt and other necessary documents.

**OTHER REQUIREMENTS:**

For the purpose, the following are additional requirements for the various furniture and fixtures listed above:

- Mounting and Installation costs are included in the ABC; and
- At least 1-Year Manufacturer Warranty

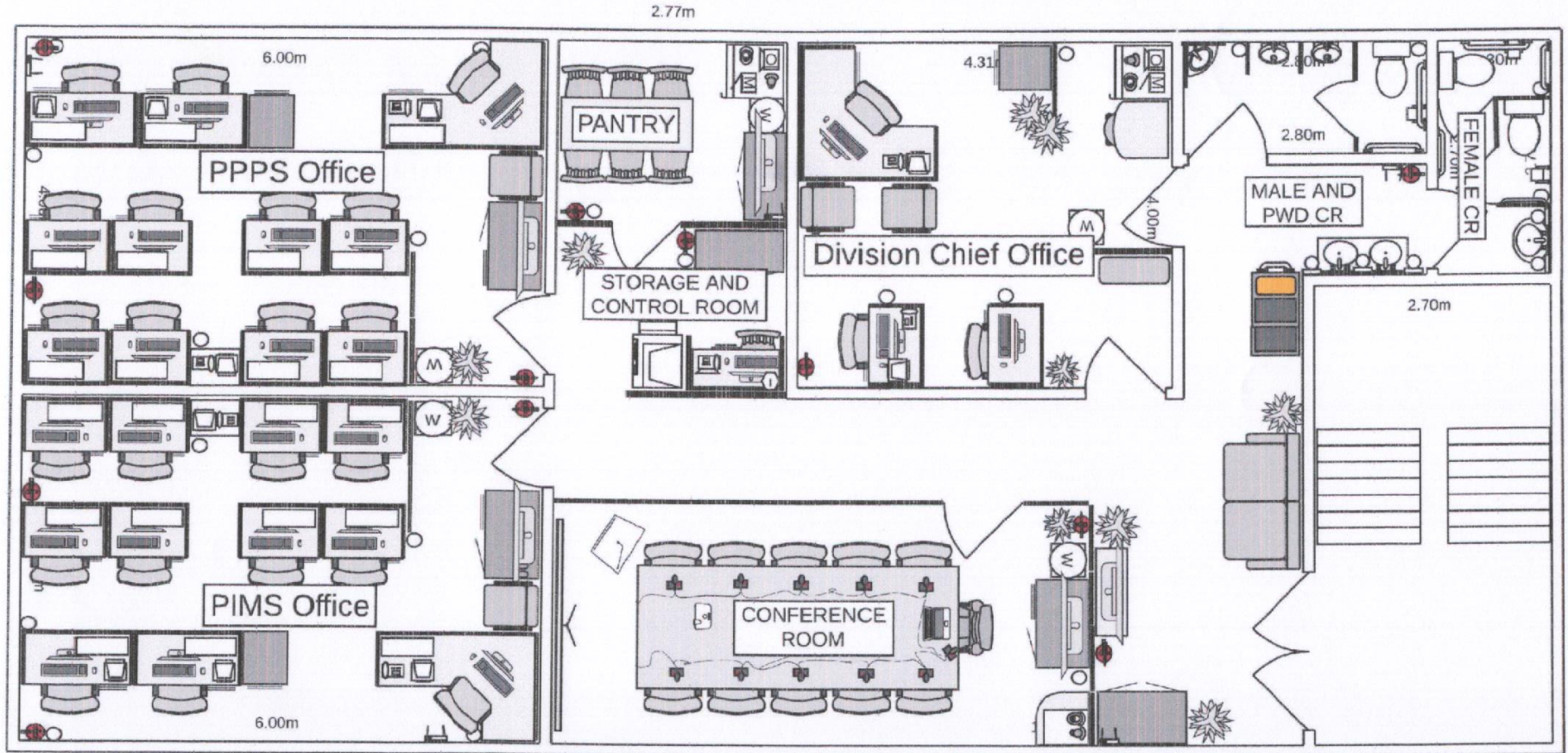
Prepared by:

*D. Fulgar*  
**ENGR. DEXTER E. FULGAR**  
 Procurement Coordinator, PPMD

Approved by:

*C. Polido*  
**ENGR. CRISTY CECILIA P. POLIDO**  
 Chief, PPMD

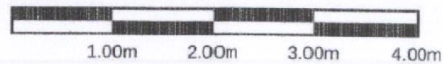
# PPMD OFFICE (25 STAFF)



2  
A-4

## SECOND FLOOR PLAN - PROPOSED BAFE OFFICE (PPMD)

Scale 1:62



NTC